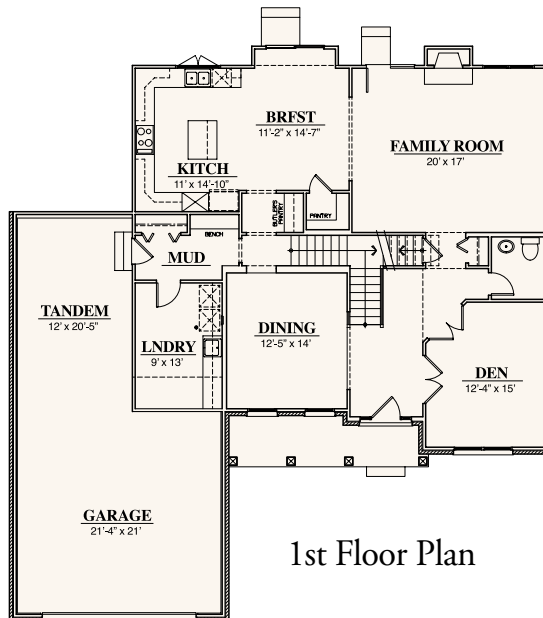
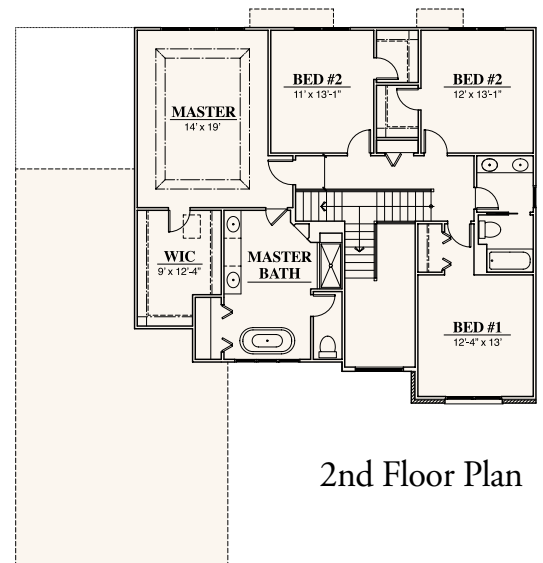


the
DORCHESTER

This spacious two-story design welcomes you with a spacious foyer with staircase, a convenient den, formal dining room with butler's pantry, generous great room and large kitchen with breakfast counter in island. The first floor has 9' ceilings throughout. The second floor includes a luxurious master suite with a volume ceiling, luxury master bath and three additional bedrooms. The Dorchester includes a deep full basement, 3-car attached tandem garage, front masonry exterior and a large landscaped homesite.



1st Floor Plan



2nd Floor Plan



Constructed by Chestnut Homes, Inc.
www.chestnuthomes.com

Exterior rendering is artist's conception only.
All dimensions are approximate; specifications are subject to change without prior notice by Developer



the

DORCHESTER

Features & Amenities

KITCHEN

- Custom designed cabinets per cabinet plan
- KitchenAid® 36 inch 5 burner stainless steel gas cooktop
- KitchenAid® stainless steel built-in 30" electric convection oven/microwave
- Double bowl under-mount stainless steel sink with pull out single lever faucet control
- KitchenAid® stainless steel multiple cycle dishwasher
- Granite counter tops
- Oak flooring
- Pantry with easy clean shelving
- Garbage Disposal

MASTER SUITE

- Spacious master bedroom with volume ceiling
- Large walk-in closet with custom shelving plan
- Luxury master bath with free standing soaker tub
- Custom designed cabinets including make-up area
- Six foot walk-in shower with integrated seat and ceramic tile surround
- Granite countertop with undermount sinks
- Mirror with wood frame
- Deep linen storage
- Ceramic tile designer flooring
- Deluxe Moen faucets
- Kohler water closet

BATHS & CLOSETS

- Large closets in all bedrooms
- Oversized hall linen closet
- Easy clean shelving in all closets
- Ceramic tile designer flooring
- Ceramic tile tub/shower surround
- Cultured marble tops and Moen faucets
- Furniture quality vanity in powder room
- Oak flooring in powder room

INTERIOR

- Staircase with hardwood railing
- 9' first floor ceilings
- White solid core 2-panel doors with wide base and casing
- Oak flooring in foyer and powder room
- Designer selected wall-to-wall carpeting and pad throughout

- Crown moulding in foyer, dining room and den
- Designer coordinated interior light fixtures
- High efficiency gas fireplace in great room
- Schlage brushed nickel lever door hardware

EXTERIOR

- Three car tandem attached garage with steel insulated overhead door and electric opener
- Brick veneer, stone and smartside shake shingles on front
- Maintenance-free vinyl siding per plan
- Vinyl soffit and fascia, aluminum gutters and downspouts
- Eight foot fiberglass entry door with sidelights
- Vinyl insulated low "E" windows with grills and removable screens
- Asphalt driveway and concrete service walks
- Three (3) exterior GFI electrical outlets
- Two (2) frost-proof water hose valves, one front and one rear
- Designer selected exterior lighting
- Decorator grills on all windows

UTILITIES & STORAGE

- Individual laundry room with gas line, vent and water hook up
- Cabinets with drop-in laundry sink and wall cabinets
- 200 Amp electric service panel with circuit breakers
- High efficiency gas fired forced-air furnace
- Automatic gas fired glass lined energy efficient 50 gallon water heater
- Three designated television and telephone jacks
- 13 SEER 4 ton central air conditioning

FOR YOUR PEACE OF MIND

- Full, deep basement with perimeter walls framed, insulated and ready for finishing
- Plumbing rough-in for future bath
- Self-sealing fiberglass shingles with ice and water shield
- Ten (10) Year insured warranty issued by Professional Warranty Service Corporation
- Large landscaped homesite per plan
- Tyvek® or equivalent exterior house wrap per plan
- Smoke and carbon monoxide detectors