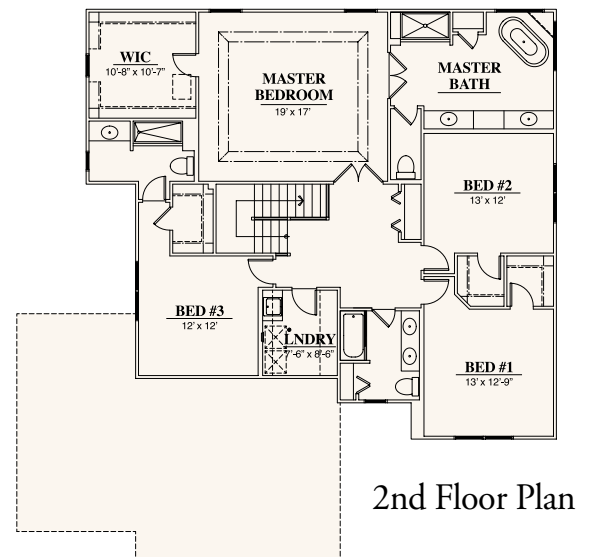
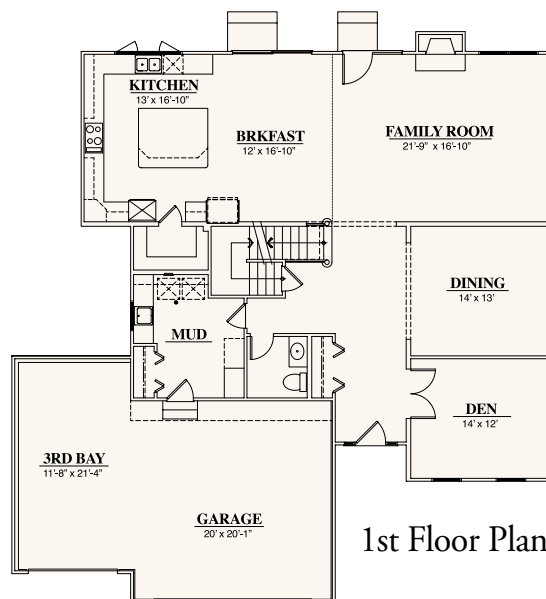


the
**B
R
O
O
K
B
A
N
K
I**

The inviting two-story design with covered front porch leads you to the detailed foyer with a custom wood and wrought iron staircase. The first floor, with its nine-foot ceilings, has wide moldings to accentuate the large dining room, den, great room and kitchen, all easily accessed from the foyer. The large gourmet kitchen with stainless appliances, has numerous work spaces that can be shared with guests sitting at the large breakfast counter. The second floor features a luxurious master suite with a coffered ceiling and sensational master bath. The three secondary bedrooms include walk-in closets and share the two additional full baths. For the busy household, laundry rooms are located on both the first and second floors.



CHESTNUT HOMES INC.
www.chestnuthomes.com

Exterior rendering is artist's conception only. All dimensions are approximate; specifications are subject to change without prior notice by Developer.



the

B
R
O
O
K
B
A
N
K
I

Features & Amenities

KITCHEN

- Custom designed cabinets
- KitchenAid® 36 inch 5 burner stainless steel gas cooktop
- KitchenAid® stainless steel built-in 30" electric convection double oven
- Under-counter microwave oven
- Under-mount stainless steel sink with pull out single lever faucet control
- KitchenAid® stainless steel multiple cycle dishwasher
- Granite counter tops
- 5-inch wide wood flooring
- Large walk-in pantry with easy clean shelving
- Garbage Disposal

MASTER SUITE

- Spacious master bedroom with volume ceiling
- Large walk-in closet with custom shelving plan
- Luxury master bath with free-standing soaker tub
- Custom designed cabinets
- Six-foot walk-in shower with integrated seat and ceramic tile surround
- Granite countertop with undermount sinks
- Mirror with wood frame
- Deep linen storage
- Ceramic tile designer flooring
- Designer Moen faucets
- Kohler water closet

BATHS & CLOSETS

- Walk-in closets in all bedrooms
- Oversized linen closets
- Easy clean shelving in all closets
- Ceramic tile designer flooring
- Ceramic tile tub/shower surround
- Granite tops and Moen faucets
- Furniture quality vanity in powder room
- 5-inch wide wood flooring in powder room

INTERIOR

- Custom staircase with wrought iron balusters
- 9' first floor ceilings
- White solid core oversized 2-panel doors with wide base and casing
- 5-inch wide hardwood flooring on entire first floor except mudroom

- Designer selected wall-to-wall carpeting on entire second floor
- Crown moulding in foyer, dining room, den, powder room, family room, kitchen, breakfast and master bedroom
- Picture mould in foyer
- Designer coordinated interior light fixtures
- High efficiency gas fireplace in great room
- Schlage® Designer lever door hardware

EXTERIOR

- Three car attached garage with steel insulated overhead doors and electric openers
- James Hardie low maintenance siding, stone and LP shakes on front
- Aluminum gutters and downspouts
- Eight-foot tall entry door with sidelights
- Jeld-Wen® insulated low "E" windows with grills and removable screens
- Asphalt driveway and concrete service walks
- Three (3) exterior GFI electrical outlets
- Two (2) frost-proof water hose valves, one front and one rear
- Designer selected exterior lighting

UTILITIES & STORAGE

- First and second floor laundry rooms with gas line, vent and water hook up
- Cabinets with drop-in laundry sink
- 200 Amp electric service panel with circuit breakers
- High efficiency gas fired forced-air furnace
- Automatic gas fired glass lined energy efficient 50 gallon water heater
- Three designated television and telephone jacks
- 13 SEER central air conditioning

FOR YOUR PEACE OF MIND

- Full, deep basement with perimeter walls framed, insulated and ready for finishing
- Plumbing rough-in for future bath in basement
- Self-sealing fiberglass shingles with ice and water shield
- Ten (10) Year insured warranty issued by Professional Warranty Service Corporation
- Large landscaped homesite per plan
- Tyvek® or equivalent exterior house wrap per plan
- Smoke and carbon monoxide detectors